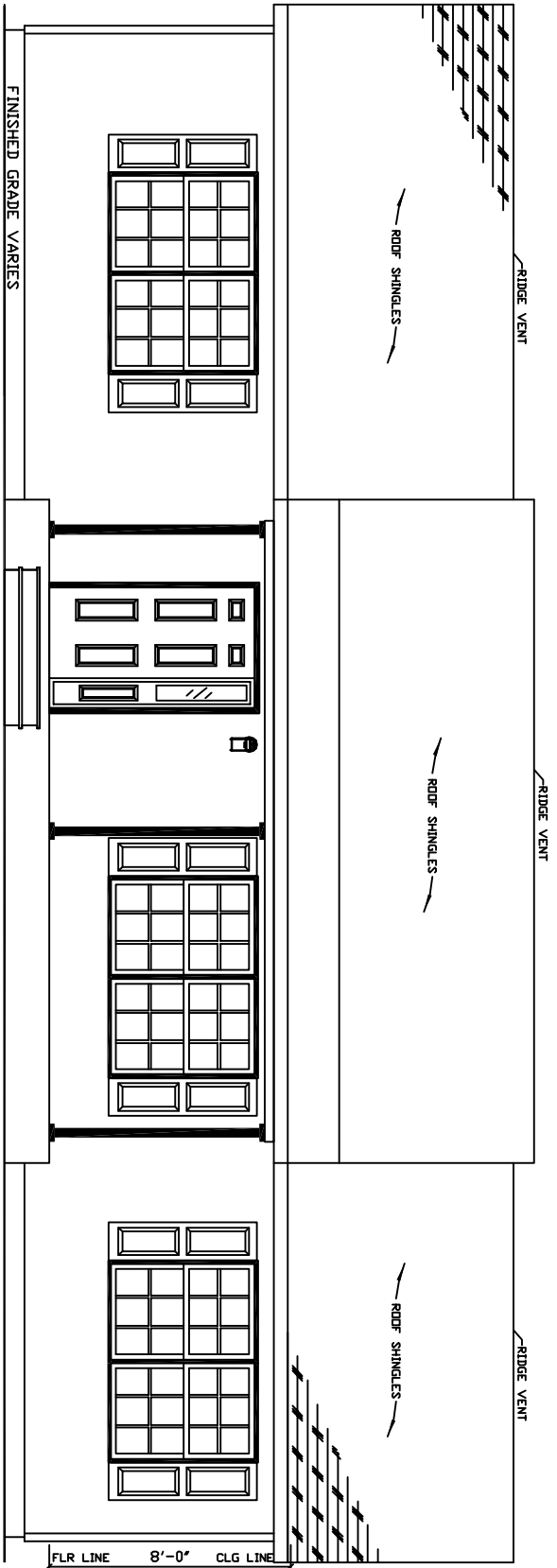


CAN LIGHTS ARE TO BE TYPE '1C,'  
 ALL RECEPTACLES SERVING KITCHEN COUNTER TOP AREAS WILL BE GFI PROTECTED  
 IN ACCORDANCE WITH NEC 210.52(C)  
 EACH BATHROOM LAVATORY BOWL WILL HAVE A GFI PROTECTED RECEPTACLE  
 IN ACCORDANCE WITH NEC 210.52(D)  
 ALL BRANCH CIRCUITS SUPPLYING 15 & 20 AMPERE OUTLETS IN BEDROOMS ARE PROTECTED  
 BY AN ARC-FULT CIRCUIT INTERRUPTER IN ACCORDANCE W/SECTION 210.12

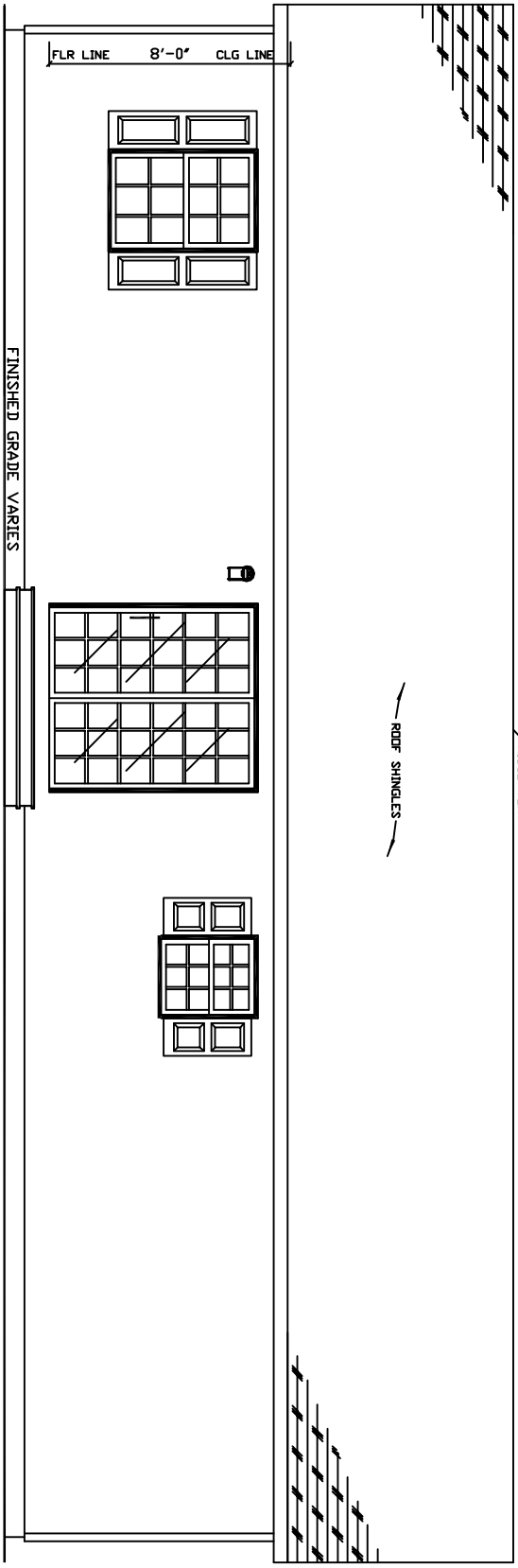
SYSTEM APPROVAL #		M 0497-02-073	
		R.R.#2 BOX 688 LIVERPOOL, PA 17045 (717) 444-3395 FAX (717) 444-7677 WWW.EXCELHOMES.COM	
DRAWN BY: JS		CHECKED BY: [Signature]	
DATE: 03/28/2008		SCALE: 1/4"=1'-0"	
REVISIONS:		DISK NO: XL16999	
FROM THE INSIDE OUT		03/28/08 0934	



COLUMNS, STEPS, RAILING, PORCH FLR AND  
 HEADER TO BE SUPPLIED AND INSTALLED  
 BY BUILDER. TEMPORARY SUPPORT POSTS  
 AND ROOF SYSTEM BY EXCEL HOMES, INC.

SYSTEM APPROVAL # M 0497-02-073

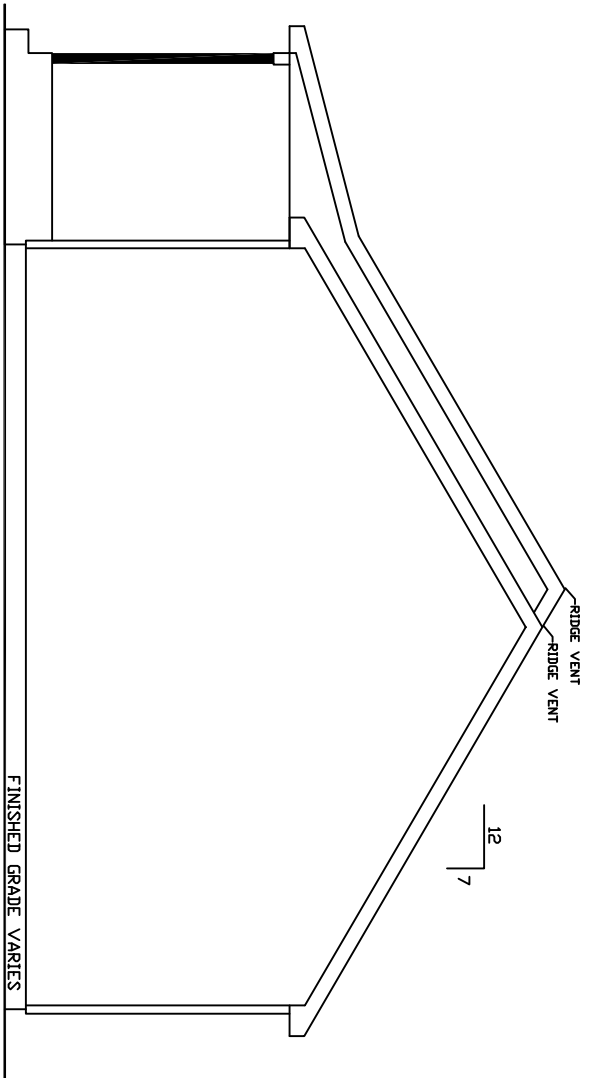
<p><b>excel HOMES</b>                  FROM THE INSIDE OUT                  WWW.EXCELHOMES.COM</p>		<p>R.R.#2 BOX 688                  LIVERPOOL, PA 17046                  (717) 444-3395                  FAX (717) 444-7677</p>	
<p>FRONT ELEVATION</p>		<p>SCALE: 1/4"=1'-0"</p>	
<p>DRAWN BY: JS</p>	<p>CHECKED BY:</p>	<p>DATE: 03/28/2008</p>	<p>DISK NO: XL16999</p>
<p>REVISIONS:</p>		<p>03/28/08 0934</p>	



DO NOT SCALE THIS DRAWING, PHOTOCOPIES ARE NOT TO SCALE DRAWING MAY BE REVERSED

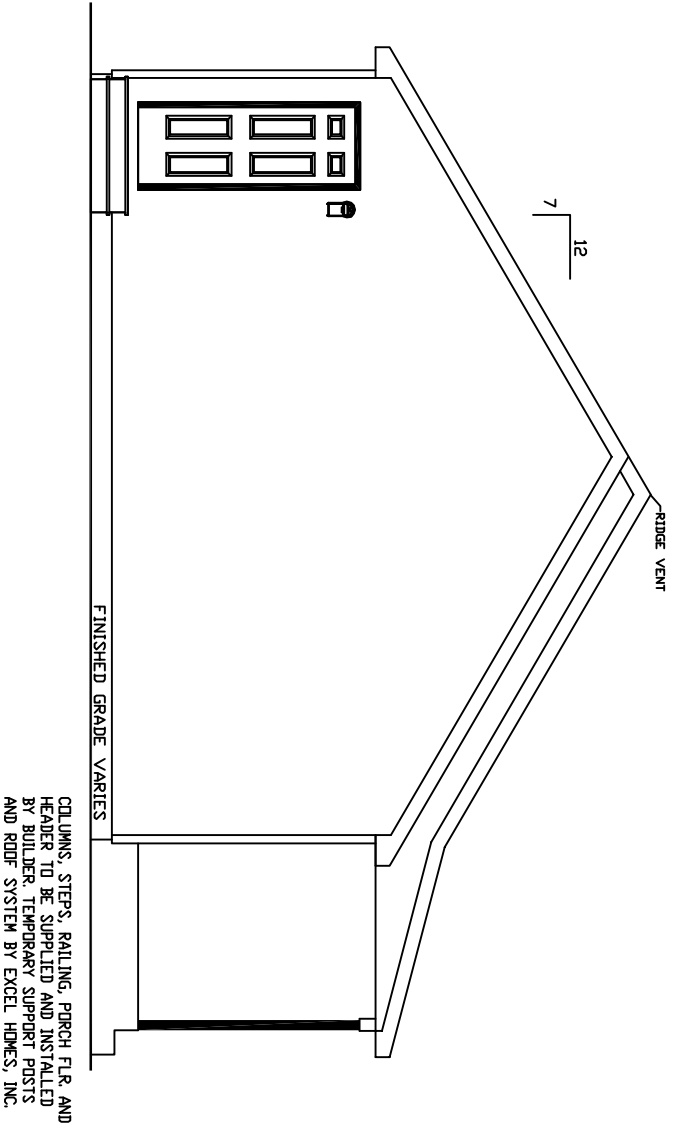
SYSTEM APPROVAL #		M 0497-02-073	
<p><b>excel</b>  <b>HOMES</b></p> <p>R.R.#2 BOX 683          LIVERPOOL, PA 17046          (717) 444-3395          FAX (717) 444-7677          WWW.EXCELHOMES.COM</p>		<p>REAR ELEVATION</p> <p>4B</p>	
DRAWN BY:	JS	CHECKED BY:	
REVISIONS:		DATE:	03/28/2008
		SCALE:	1/4"=1'-0"
		DISK NO:	XL16999
			03/28/08 0934

EL2



COLUMNS, STEPS, RAILING, PORCH FLR, AND  
 HEADER TO BE SUPPLIED AND INSTALLED  
 BY BUILDER. TEMPORARY SUPPORT POSTS  
 AND ROOF SYSTEM BY EXCEL HOMES, INC.

SYSTEM APPROVAL #		M 0497-02-073	
<p><b>Excel HOMES</b>                  FROM THE INSIDE OUT                  WWW.EXCELHOMES.COM</p>		R.R.#2 BOX 688 LIVERPOOL, PA 17046 (717) 444-3395 FAX (717) 444-7677	
LEFT ELEVATION		4C	
DRAWN BY:	CHECKED BY:	DATE:	SCALE:
JS		03/28/2008	1/4"=1'-0"
REVISIONS:			DISK NO:
		03/28/08 0934	XL16999



SYSTEM APPROVAL #

M 0497-02-073

RIGHT ELEVATION

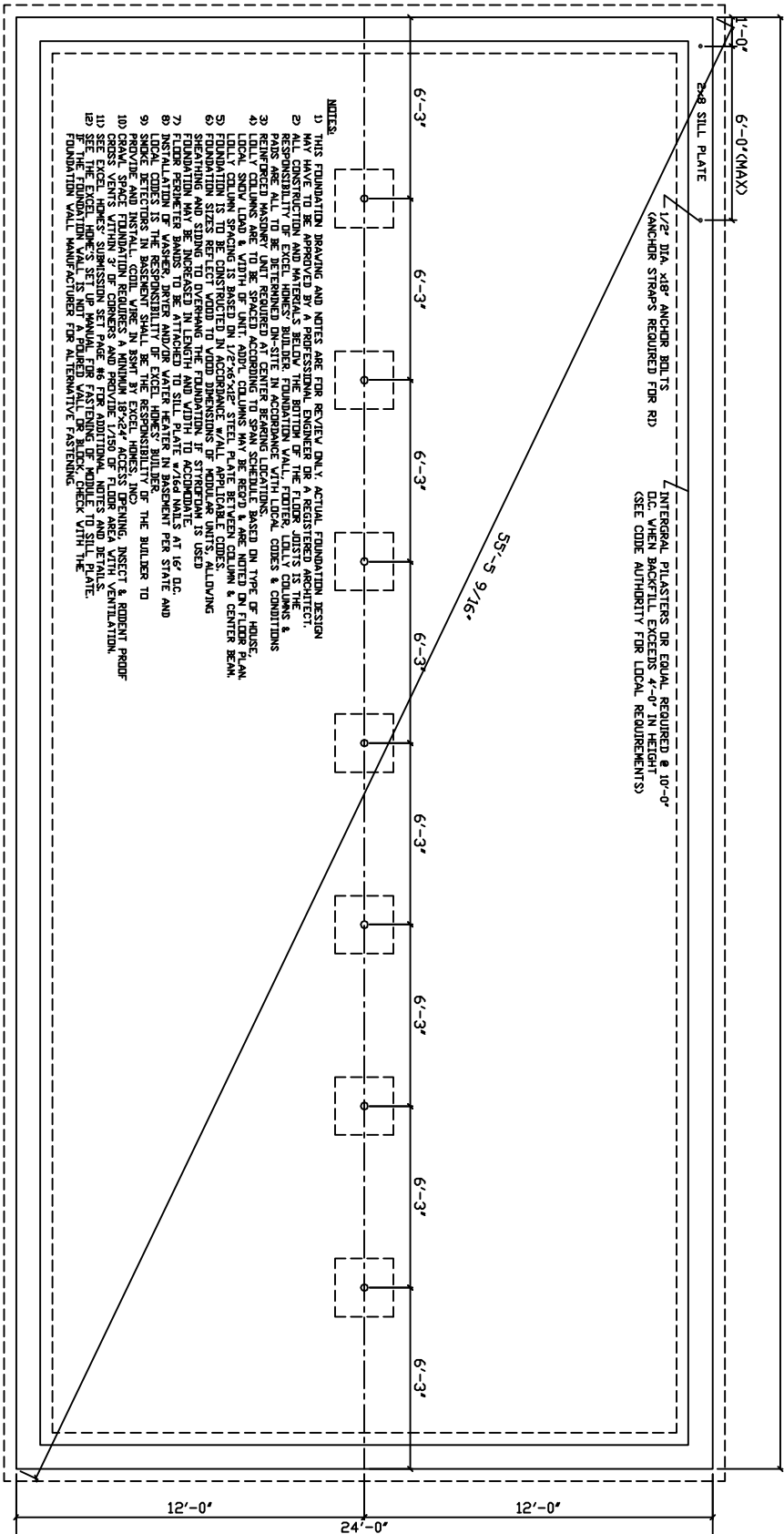
4D

**excel**  
**HOMES**  
 RR #2 BOX 683  
 LIVERPOOL, PA 17045  
 (717) 444-3395  
 FAX (717) 444-7677  
 WWW.EXCELHOMES.COM

FROM THE INSIDE OUT

DRAWN BY:	JS	CHECKED BY:		DATE:	03/28/2008	SCALE:	1/4"=1'-0"
REVISIONS:						DISK NO:	XL16999

03/28/08 0934



- NOTES:
- 1) THIS FOUNDATION DRAWING AND NOTES ARE FOR REVIEW ONLY. ACTUAL FOUNDATION DESIGN SHALL BE THE RESPONSIBILITY OF THE ARCHITECT.
  - 2) ALL CONSTRUCTION AND MATERIALS BELOW THE BOTTOM OF THE FLOOR JOISTS IS THE RESPONSIBILITY OF EXCEL HOMES' BUILDER FOUNDATION WALL, FLOOR, LOBBY COLUMNS & PARTS ARE ALL TO BE DETERMINED ON-SITE IN ACCORDANCE WITH LOCAL CODES & CONDITIONS.
  - 3) LOCAL CODES SHALL BE DETERMINED BY THE ARCHITECT AND THE BUILDER.
  - 4) LOBBY COLUMNS ARE TO BE SPACED ACCORDING TO SPAN SCHEDULE BASED ON TYPE OF HOUSE.
  - 5) LOCAL SNOW LOAD & WINDSPEED SHALL BE DETERMINED BY THE ARCHITECT AND THE BUILDER.
  - 6) FOUNDATION WALLS SHALL BE CONCRETE OR CMU WITH 1/2" CORNER STEEL PLATE BETWEEN COLUMN & CENTER BEAM.
  - 7) FOUNDATION WALLS SHALL BE CONCRETE OR CMU WITH 1/2" CORNER STEEL PLATE BETWEEN COLUMN & CENTER BEAM.
  - 8) FOUNDATION WALLS SHALL BE CONCRETE OR CMU WITH 1/2" CORNER STEEL PLATE BETWEEN COLUMN & CENTER BEAM.
  - 9) FOUNDATION WALLS SHALL BE CONCRETE OR CMU WITH 1/2" CORNER STEEL PLATE BETWEEN COLUMN & CENTER BEAM.
  - 10) FOUNDATION WALLS SHALL BE CONCRETE OR CMU WITH 1/2" CORNER STEEL PLATE BETWEEN COLUMN & CENTER BEAM.
  - 11) FOUNDATION WALLS SHALL BE CONCRETE OR CMU WITH 1/2" CORNER STEEL PLATE BETWEEN COLUMN & CENTER BEAM.
  - 12) FOUNDATION WALLS SHALL BE CONCRETE OR CMU WITH 1/2" CORNER STEEL PLATE BETWEEN COLUMN & CENTER BEAM.
  - 13) FOUNDATION WALLS SHALL BE CONCRETE OR CMU WITH 1/2" CORNER STEEL PLATE BETWEEN COLUMN & CENTER BEAM.
  - 14) FOUNDATION WALLS SHALL BE CONCRETE OR CMU WITH 1/2" CORNER STEEL PLATE BETWEEN COLUMN & CENTER BEAM.
  - 15) FOUNDATION WALLS SHALL BE CONCRETE OR CMU WITH 1/2" CORNER STEEL PLATE BETWEEN COLUMN & CENTER BEAM.
  - 16) FOUNDATION WALLS SHALL BE CONCRETE OR CMU WITH 1/2" CORNER STEEL PLATE BETWEEN COLUMN & CENTER BEAM.
  - 17) FOUNDATION WALLS SHALL BE CONCRETE OR CMU WITH 1/2" CORNER STEEL PLATE BETWEEN COLUMN & CENTER BEAM.
  - 18) FOUNDATION WALLS SHALL BE CONCRETE OR CMU WITH 1/2" CORNER STEEL PLATE BETWEEN COLUMN & CENTER BEAM.
  - 19) FOUNDATION WALLS SHALL BE CONCRETE OR CMU WITH 1/2" CORNER STEEL PLATE BETWEEN COLUMN & CENTER BEAM.
  - 20) FOUNDATION WALLS SHALL BE CONCRETE OR CMU WITH 1/2" CORNER STEEL PLATE BETWEEN COLUMN & CENTER BEAM.

SYSTEM APPROVAL # \_\_\_\_\_ M 0497-02-073

FOUNDATION PLAN 7

**excel** HOMES

R.R.#2 BOX 683  
 LYBERRPOOL, PA 17045  
 (717) 444-3395  
 FAX (717) 444-7677  
 WWW.EXCELHOMES.COM

FROM THE INSIDE OUT

DRAWN BY:	JS	CHECKED BY:		DATE:	03/28/2008	SCALE:	1/4"=1'-0"
REVISIONS:						DISK NO:	XL16999

03/28/08 0934